

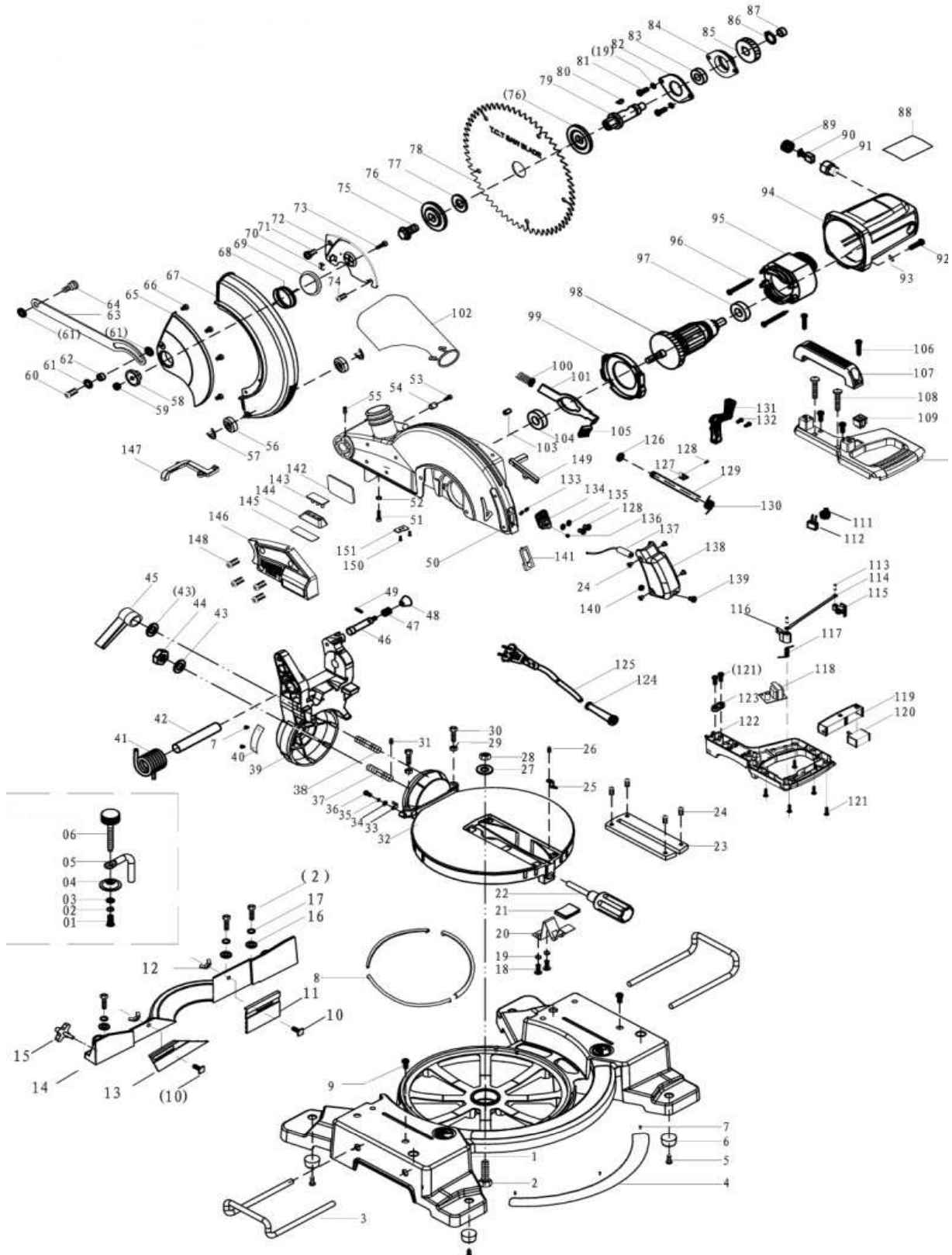
Barbuy Team S.A.

Ruta Nac. N° 9 Km 501 X2550CUR Bell Ville - Córdoba

fmartino@btatools.com.ar - repuestos@btatools.com.ar | www.btatools.com.ar

Listado de Partes

9992640.2 SIERRA INGLETAD. 255mm 1800W DP



9992640.2 SIERRA INGLETAD. 255mm 1800W DP

| Codigo | Item | Descripcion |
|---------------|-------------|--|
| R99925880 | 1 | BASE INFERIOR 1 p/9992640.2 |
| R99925881 | 2 | TORNILLO 2 p/9992640.2 |
| R99925882 | 3 | SOPORTE ANTICAIDA 3 p/9992640.2 |
| R99925883 | 4 | ESCALA GRADUADA 4 p/9992640.2 |
| R99925884 | 6 | PIE DE GOMA 6 p/9992640.2 |
| R99925885 | 8 | GUIA 8 p/9992640.2 |
| R99925886 | 11 | GUIA IQZ. 11 p/9992640.2 |
| R99925887 | 13 | GUIA DER. 13 p/9992640.2 |
| R99925888 | 14 | GUIA LATERAL 14 p/9992640.2 |
| R99925889 | 15 | MARIPOSA 15 p/9992640.2 |
| R99925890 | 20 | TRABA MESA MOVIL 20 p/9992640.2 |
| R99925891 | 21 | PERILLA 21 p/9992640.2 |
| R99925892 | 22 | MANGO GIRATORIO 22 p/9992640.2 |
| R99925893 | 23 | GUIA DE CORTE 23 p/9992640.2 |
| R99925894 | 25 | INDICADOR 25 p/9992640.2 |
| R99925895 | 27 | ARANDELA 27 p/9992640.2 |
| R99925896 | 28 | TUERCA 28 p/9992640.2 |
| R99925897 | 32 | BASE GIRATORIA 32 p/9992640.2 |
| R99925898 | 33 | INDICADOR 33 p/9992640.2 |
| R99925899 | 37 | EJE ROTACION 37 p/9992640.2 |
| R99925900 | 38 | TORNILLO DE BLOQUEO 38 p/9992640.2 |
| R99925901 | 39 | SOPORTE GIRATORIO 39 p/9992640.2 |
| R99925902 | 40 | ESCALA GRADUADA 40 p/9992640.2 |
| R99925903 | 41 | RESORTE PRINCIPAL 41 p/9992640.2 |
| R99925904 | 42 | EJE PRINCIPAL 42 p/9992640.2 |
| R99925905 | 45 | MANIJA AJUSTA SOP. GIRA 45 p/9992640.2 |
| R99925906 | 46 | EJE TRABA CARC. SUP. 46 p/9992640.2 |
| R99925907 | 47 | RESORTE 47 p/9992640.2 |
| R99925908 | 48 | PERILLA 48 p/9992640.2 |
| R99925909 | 49 | TRABA 49 p/9992640.2 |
| R99925910 | 50 | CARCAZA SUPERIOR 50 p/9992640.2 |
| R99925911 | 56 | RODILLO TIPO GUIA 56 p/9992640.2 |
| R99925912 | 58 | RODILLO TIPO GUIA 58 p/9992640.2 |
| R99925913 | 59 | TUERCA 59 p/9992640.2 |
| R99925914 | 62 | BUJE 62 p/9992640.2 |
| R99925915 | 63 | GUIA PROTECTOR SUP. 63 p/9992640.2 |
| R99925916 | 65 | PLACA PROTECTORA 65 p/9992640.2 |
| R99925917 | 67 | PROTECTOR MOVIL 67 p/9992640.2 |
| R99925918 | 68 | RESORTE PROTECTO MOVIL 68 p/9992640.2 |
| R99925919 | 69 | GUIA DE RESORTE 69 p/9992640.2 |
| R99925920 | 72 | PROTECTOR 72 p/9992640.2 |
| R99925921 | 76 | JGO ARANDELA APOYO 76 p/9992640.2 |
| R99925922 | 77 | ANILO D/GUIA HOJA DE SIERRA 77 |
| R99925923 | 79 | EJE DE MANDO 79 p/9992640.2 |
| R99925924 | 80 | CHAVETA 80 p/9992640.2 |
| R99925925 | 82 | TAPA DE RODAMIENTO 82 p/9992640.2 |
| R99925926 | 84 | PROTECTOR RODAMIENTO 84 p/9992640.2 |
| R99925927 | 85 | ENGRANAJE 85 p/9992640.2 |
| R99925928 | 87 | RODILLO 87 p/9992640.2 |
| R99925929 | 89 | TAPA PORTA CARBONES 89 p/9992640.2 |
| R99925930 | 90 | JGO DE CARBONES 90 p/9992640.2 |
| R99925931 | 91 | PORTA CARBONES 91 p/9992640.2 |

9992640.2 SIERRA INGLETAD. 255mm 1800W DP

| Codigo | Item | Descripcion |
|---------------|-------------|--------------------------------------|
| R99925932 | 94 | CARCAZA DE MOTOR 94 p/9992640.2 |
| R99925933 | 95 | ESTATOR 95 p/9992640.2 |
| R99925934 | 98 | ROTOR 98 p/9992640.2 |
| R99925935 | 99 | DEFECTOR DE AIRE 99 p/9992640.2 |
| R99925936 | 100 | RESORTE TRABA DISCO 100 p/9992640.2 |
| R99925937 | 101 | TRABA DISCO 101 p/9992640.2 |
| R99925938 | 102 | BOLSA PARA POLVO 102 p/9992640.2 |
| R99925939 | 107 | MANIJA DE TRANSPORTE 107 p/9992640.2 |
| R99925940 | 109 | INTERRUPTOR DOBLE 109 p/9992640.2 |
| R99925941 | 110 | TAPA SUP. DE MANIJA 110 p/9992640.2 |
| R99925942 | 111 | INDUCTOR 111 p/9992640.2 |
| R99925943 | 112 | CAPACITOR 112 p/9992640.2 |
| R99925944 | 114 | GUIA INTERRUP. DE SEGURIDAD 114 |
| R99925945 | 115 | INTERRUPTOR DER. 115 p/9992640.2 |
| R99925946 | 116 | INTERRUPTOR IZQ. 116 p/9992640.2 |
| R99925947 | 117 | RESORTE 117 p/9992640.2 |
| R99925948 | 118 | TRANSFORMADOR 118 p/9992640.2 |
| R99925949 | 119 | PERILLA PRINCIPAL 119 p/9992640.2 |
| R99925950 | 120 | INTERRUPTOR 120 p/9992640.2 |
| R99925951 | 122 | TAPA INF. DE MANIJA 122 p/9992640.2 |
| R99925952 | 126 | ORING 126 p/9992640.2 |
| R99925953 | 129 | EJE 129 p/9992640.2 |
| R99925954 | 130 | RESORTE 130 p/9992640.2 |
| R99925955 | 131 | TRABA CABEZAL MOVIL 131 p/9992640.2 |
| R99925956 | 01 | TORNILLO 01 p/9992640.2 |
| R99925957 | 04 | ARANDELA DE PRESION 04 p/9992640.2 |
| R99925958 | 05 | VARILLA DE SUJETACION 05 p/9992640.2 |
| R99925959 | 06 | MANIJA DE AJUSTE 06 p/9992640.2 |